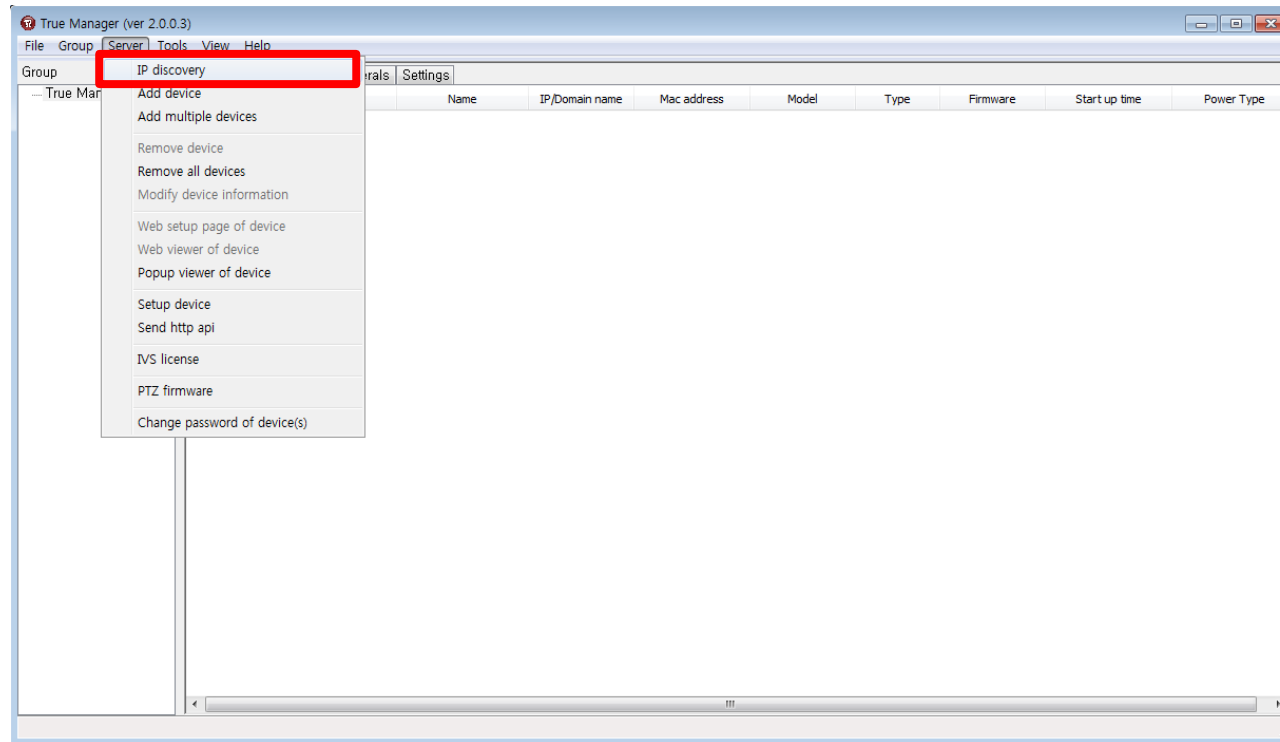


How to reset Password

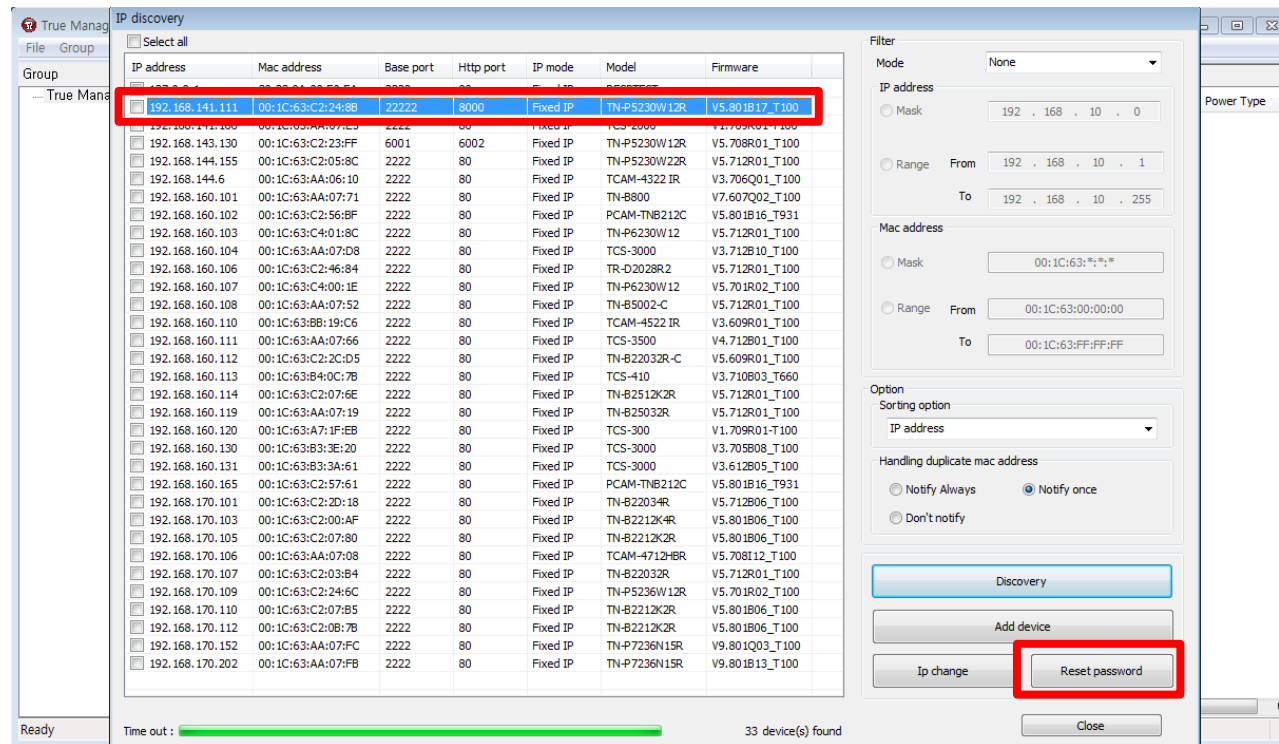
- How to get device_key
- How to load reset_key

➤ How to get device_key



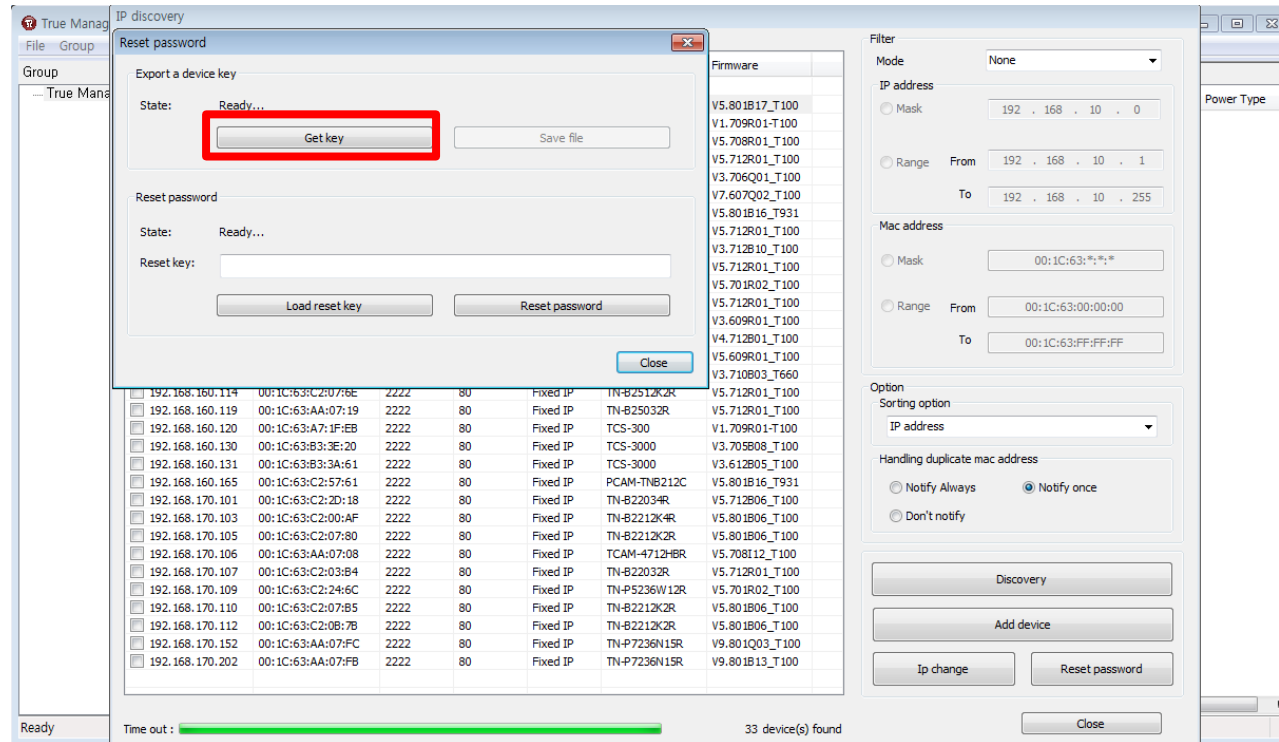
- server → IP discover
- 'IP discovery' will pop-up

➤ How to get device_key



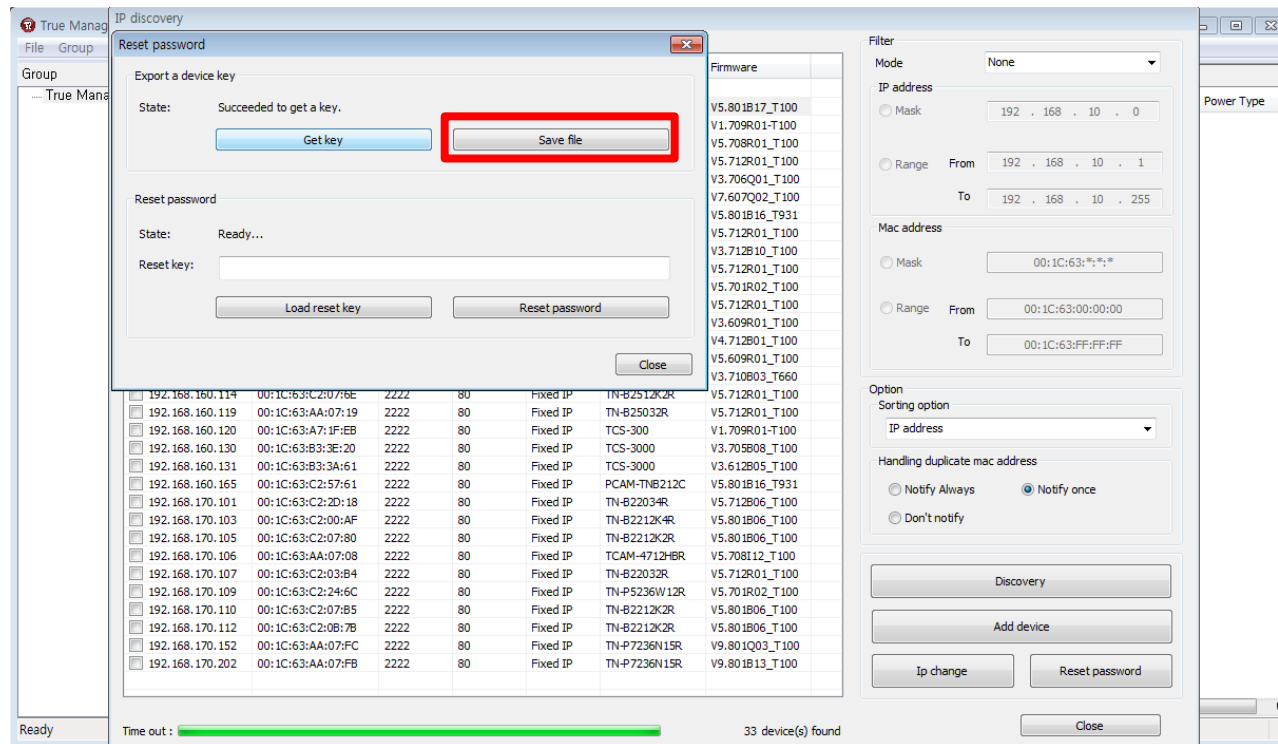
- Select the unit and click 'Reset password'
- 'Reset password' will pop up

➤ How to get device_key



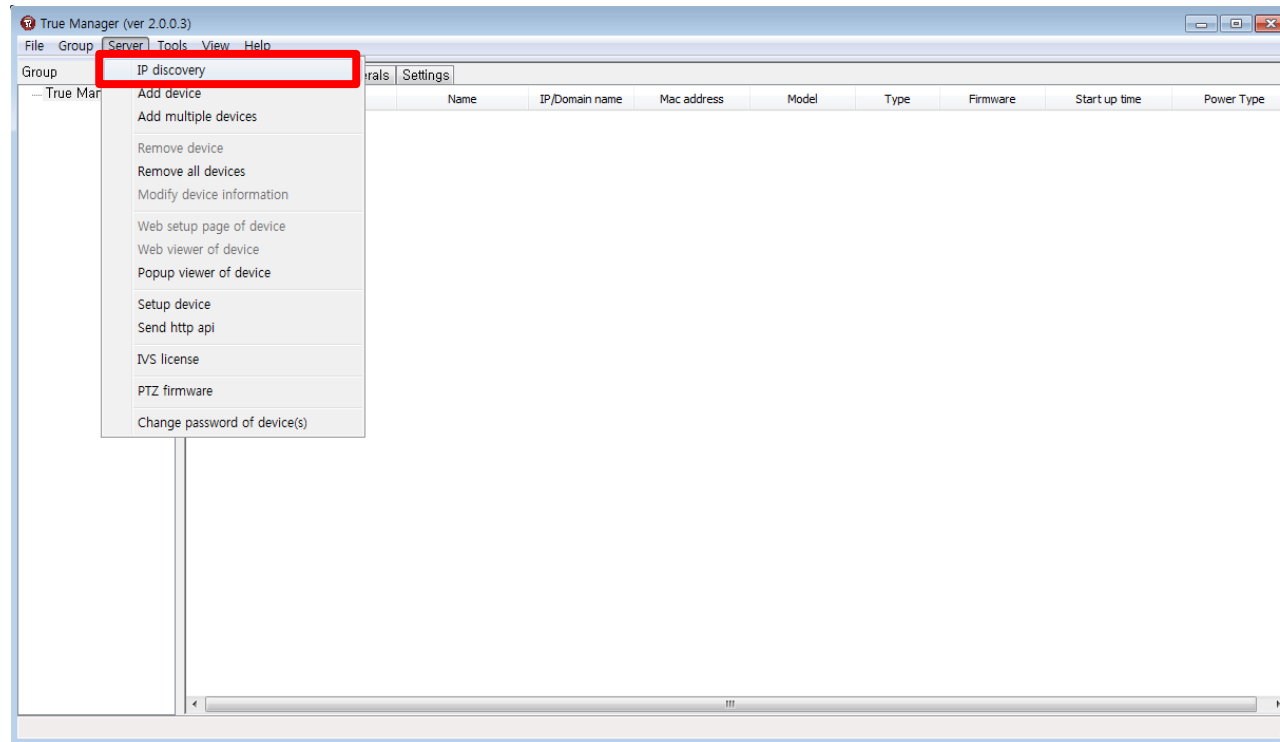
- Click Get key
- Save file will be activated

➤ How to get device_key



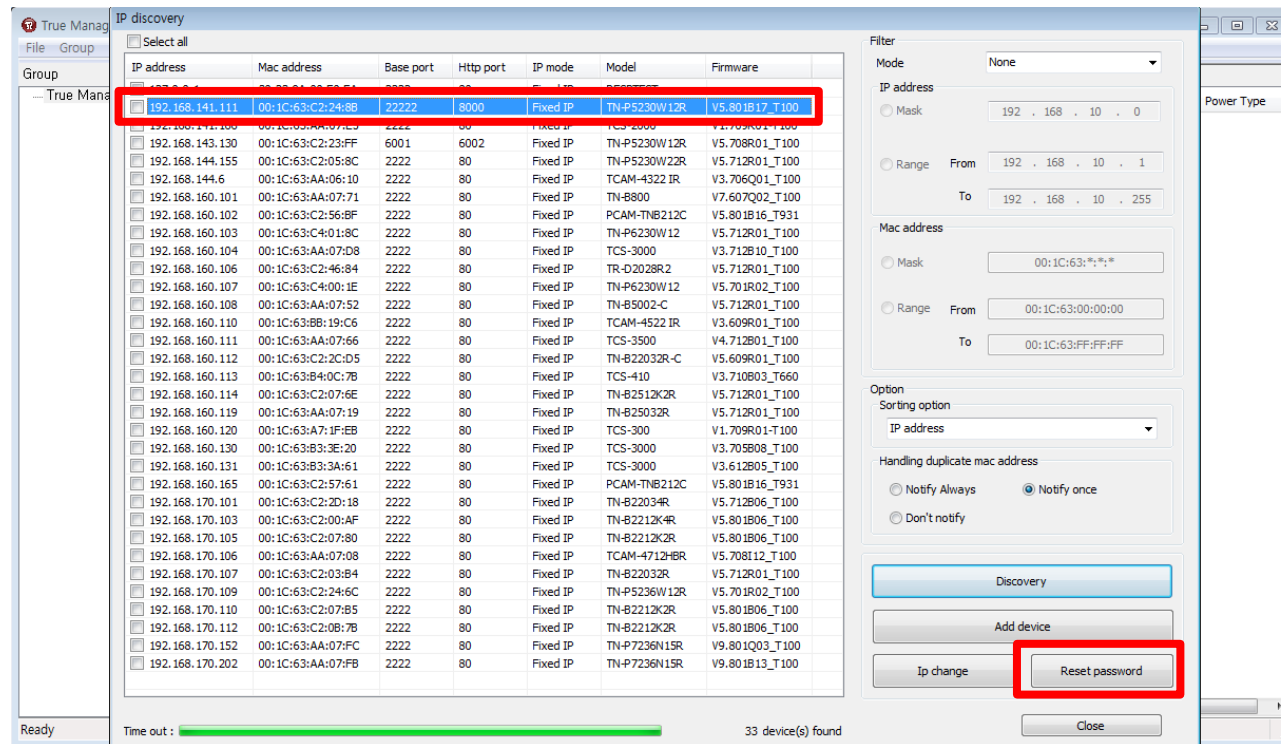
- Click Save file
- Save the file
- File format is device key(*.tck) and send the device key file to us via email.

➤ How to load reset_key



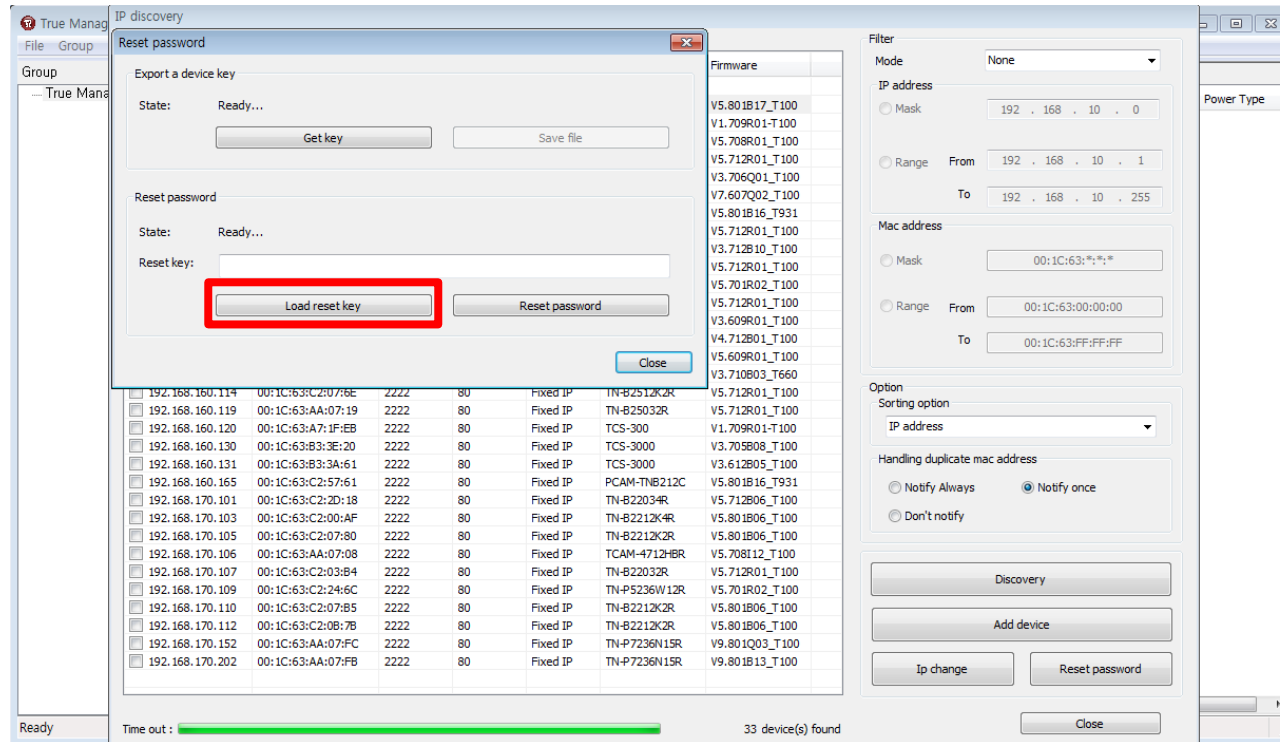
- server → IP discover
- 'IP discovery' will pop-up

➤ How to load reset_key



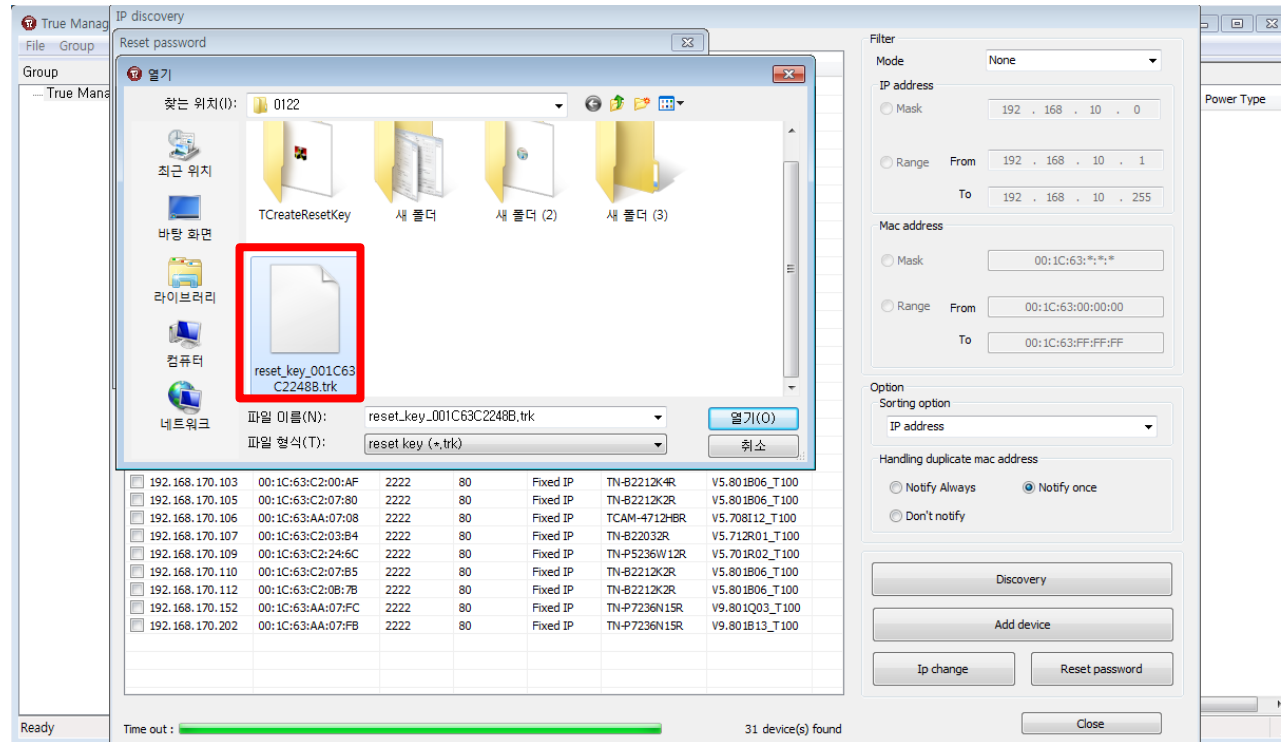
- Select the unit and click 'Reset password'
- 'Reset password' will pop up

➤ How to load reset_key



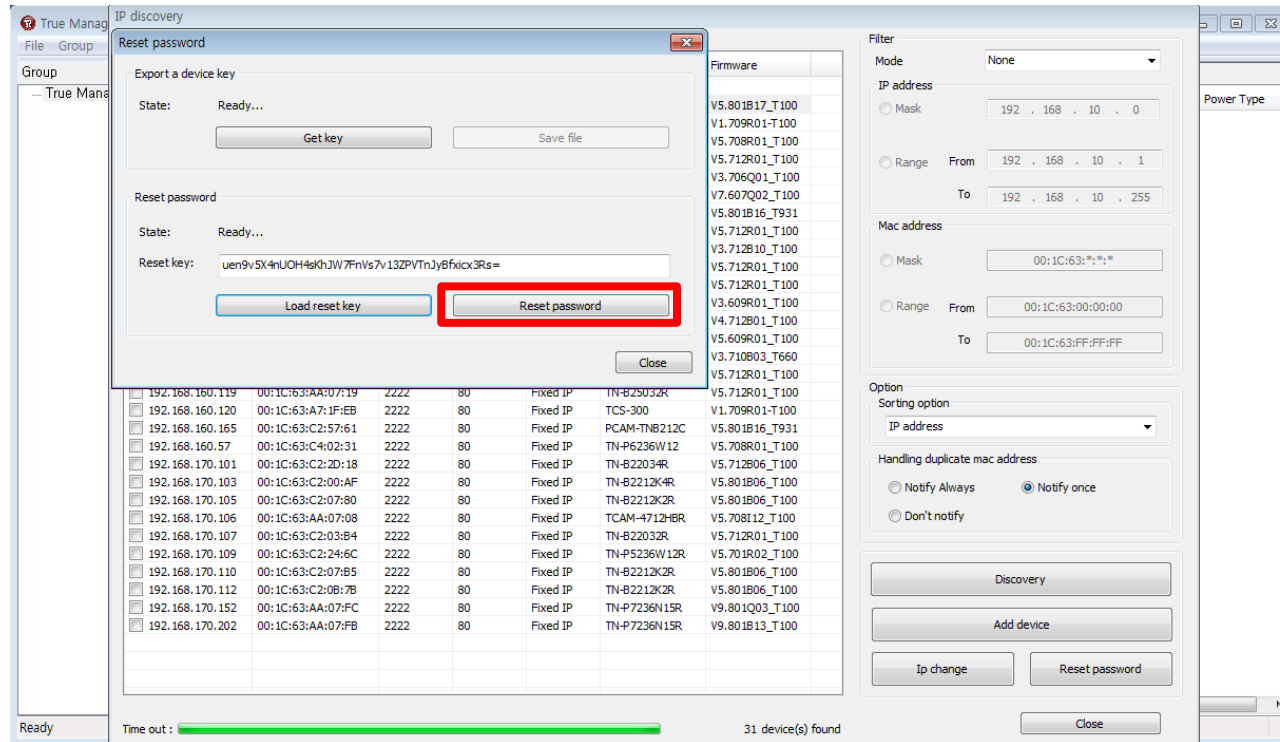
- Click Load reset key

➤ How to load reset_key



- Select the file and open
- File format is reset key(*.trk)

➤ How to load reset_key



- Reset key : (Ex. uen9v5X4nUOH4sKhJW7FnVs7v13ZPVTnJyBfxicx3Rs=)
- Reset password Click
- Password reset is done.
- Default ID/PW: admin / 1234